



Science **made** smarter

Technical Release Note
ONLY for Distributors

AS608/AS608e Firmware 1.13



Interacoustics



Title:	AS608/AS608e Firmware 1.13 Technical Release Note
Project:	AS608/AS608e Firmware 1.13
Author:	Renskje K. Hietkamp – Clinical Product Manager Lillian Bjørn Nielsen – Senior Product Manager
Date issued:	October 2022

Table of Contents

Introduction.....	2
New language on AS608/AS608e.....	2
Compatibility	2
How to update.....	2



Introduction

Dear distributor and colleague,

Interacoustics is happy to announce the release of the new **AS608/AS608e Firmware 1.13**.

This release note is only for you! Please do not forward it to end-users.

The aim of this technical release note is to provide you with the necessary details for the update process. This should ensure that you are able to assist and guide the user in the best possible way, reducing the risk of errors after the update.

New language on AS608/AS608e

The display of the AS608/AS608e now also supports Italian. Other supported languages are English, Dutch, French, German, and Spanish.

Compatibility

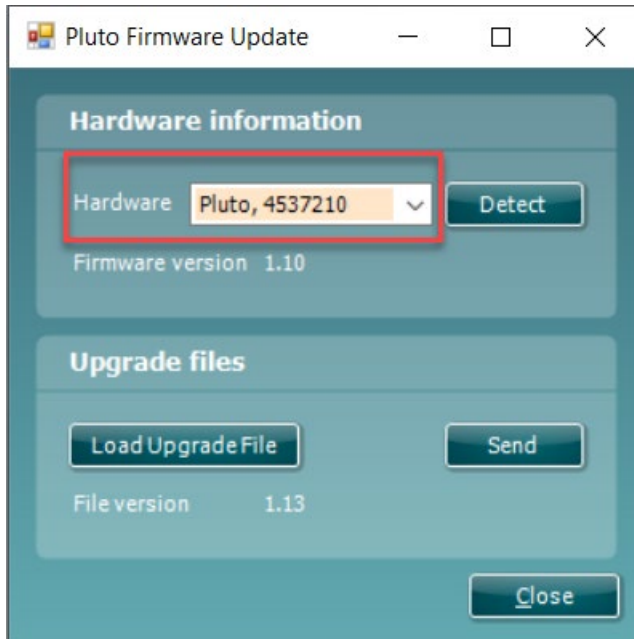
The AS608/AS608e firmware version 1.13 is compatible with

- Diagnostic Suite 2.9 and 2.10
- Noah 4.12.1
- OtoAccess® Database 2.0 and 2.1

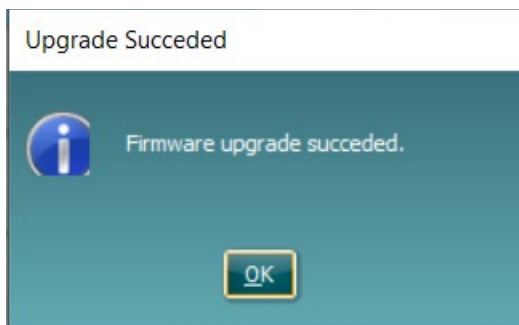
How to update

For computers with Diagnostic Suite installed, please follow the instructions below:

1. Connect the AS608/AS608e to a PC with a USB cable
2. Turn on AS608
3. On PC
 - a. Go to Interacoustics Extranet on <https://www.interacoustics.com/extranet/downloads/as608/product-updates-1> and double-click 'AS608 Firmware 1.13' to download
 - b. In the downloaded folder, double-click the file 'FirmwareUpdateAS608'
 - c. Check that the software has detected your AS608. If not, press 'Detect'.



- d. Press 'Send' to upgrade the AS608. When completed, a pop-up on the PC will state: 'Firmware upgrade succeeded'



- e. Press 'OK'. You can now disconnect AS608 from the computer if you use it as a stand-alone instrument.

4. On AS608

Turn on. After startup, the display will show 'AS608 ver 1.13' or 'AS608e ver 1.13'; this is your confirmation that the firmware has updated correctly.

Without Diagnostic Suite on your computer, the correct USB driver may be lacking, and the update procedure can fail. Should that happen, you can contact Interacoustics' technical support in your country for help.

If you are experiencing communication problems between the PC and the AS608, please ensure that the USB plug is connected and is less than 3 meters in length. These communication problems are PC dependent and may occur with some USB controllers.